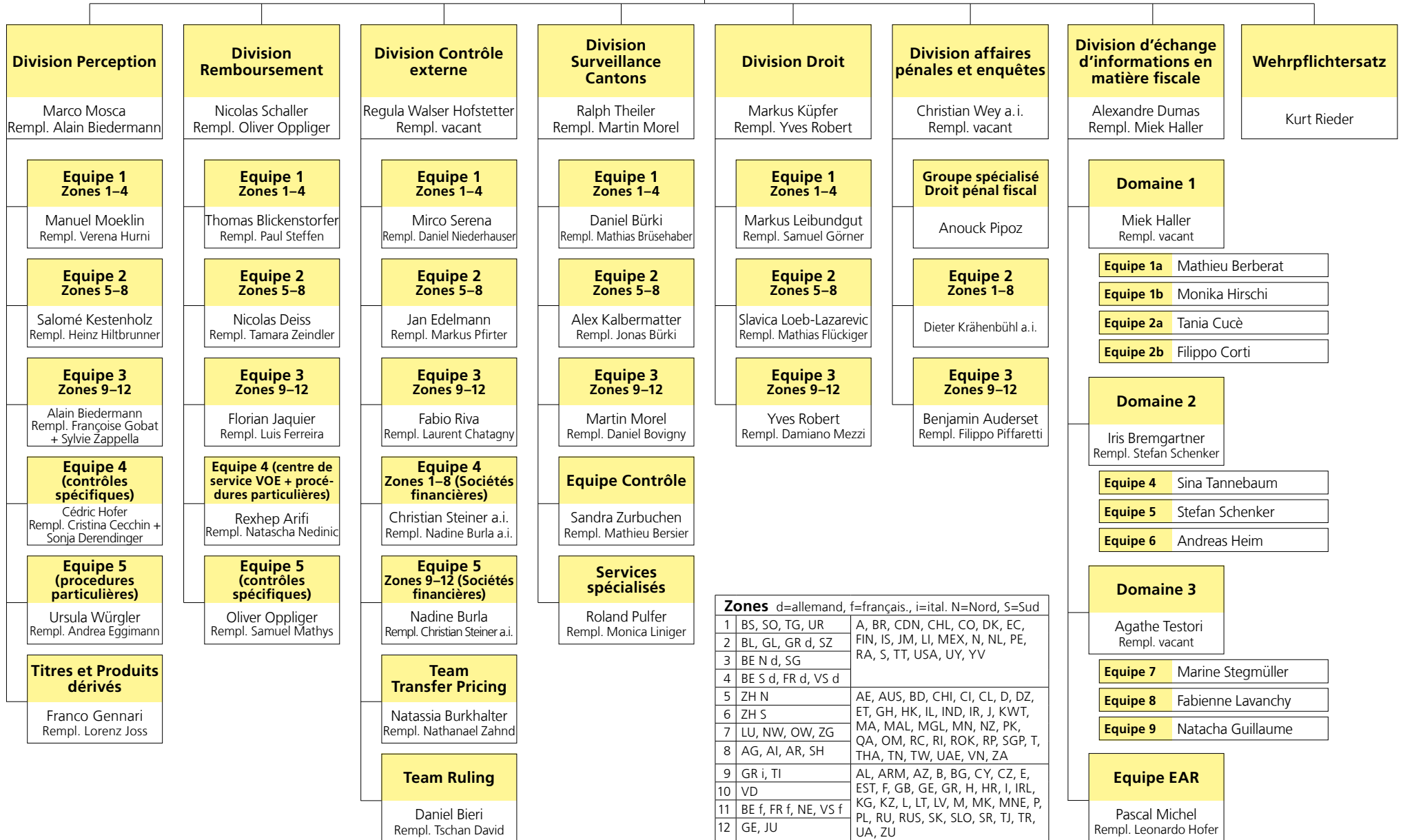




Division principale de l'impôt fédéral direct, de l'impôt anticipé, des droits de timbre
Marc Bugnon
Rempl. Markus Küpfer

Management Support
Equipe 1
Marcial Hofer
Equipe 2
Chantal Sauber



Zones d=allemand, f=français, i=ital. N=Nord, S=Sud

1	BS, SO, TG, UR	A, BR, CDN, CHL, CO, DK, EC, FIN, IS, JM, LI, MEX, N, NL, PE, RA, S, TT, USA, UY, YV
2	BL, GL, GR d, SZ	
3	BE N d, SG	
4	BE S d, FR d, VS d	
5	ZH N	AE, AUS, BD, CHI, CI, CL, D, DZ, ET, GH, HK, IL, IND, IR, J, KWT, MA, MAL, MGL, MN, NZ, PK, QA, OM, RC, RI, ROK, RP, SGP, T, THA, TN, TW, UAE, VN, ZA
6	ZH S	
7	LU, NW, OW, ZG	
8	AG, AI, AR, SH	
9	GR i, TI	AL, ARM, AZ, B, BG, CY, CZ, E, EST, F, GB, GE, GR, H, HR, I, IRL, KG, KZ, L, LT, LV, M, MK, MNE, P, PL, RU, RUS, SK, SLO, SR, TJ, TR, UA, ZU
10	VD	
11	BE f, FR f, NE, VS f	
12	GE, JU	